

THE TILE SOLUTION HAS ARRIVED!



Solar installers have waited a long time for a good way to install junction boxes on tile roofs. **The wait is over!** Introducing the **JB-2**, EZ Solar's first box designed specifically for tile roofs. *Compatible with Flat, Spanish and W-shaped tiles.*



UNIVERSAL FLASHING

- Integrates with most Flat, Spanish and W-Shaped tiles
- No cutting of tile



INNOVATIVE BOX DESIGN

- Allows box to securely fasten to roof deck
- Allows 3 sidewall entrances
- Allows installer to easily maneuver and combine wires in box
- Revolutionary din rail positioning



WEATHER-TIGHT SEAL

- Enclosure and Flashing mate together to form a weather-tight seal
- No leaking



PATENTED

A. System Specifications and Ratings

- Maximum Voltage: 1,000 Volts
- Maximum Current: 120 Amps
- Allowable Wire: 14 AWG – 6 AWG
- Spacing: Please maintain a spacing of at least ½” between uninsulated live parts and fittings for conduit, armored cable, and uninsulated live parts of opposite polarity.
- Enclosure Rating: Type 3R
- Roof Slope Range: 2.5 – 12:12
- Max Side Wall Fitting Size: 1”
- Max Floor Pass-Through Fitting Size: 1”
- Ambient Operating Conditions: (-35°C) - (+75°C)
- Compliance:
 - UL1741
 - Approved wire connectors: must conform to UL1741
- System Marking: **Interek Symbol and File #5015705**
- Periodic Re-inspections: If re-inspections yield loose components, loose fasteners, or any corrosion between components, components that are found to be affected are to be replaced immediately.

Table 1: Typical Wire Size, Torque Loads and Ratings

	1 Conductor	2 Conductor	Torque				
			Type	NM	Inch Lbs	Voltage	Current
ABB ZS6 terminal block	10-24 awg	16-24 awg	Sol/Str	0.5-0.7	6.2-8.85	600V	30 amp
ABB ZS10 terminal block	6-24 awg	12-20 awg	Sol/Str	1.0-1.6	8.85-14.16	600V	40 amp
ABB ZS16 terminal block	4-24 awg	10-20 awg	Sol/Str	1.6-2.4	14.6-21.24	600V	60 amp
ABB M6/8 terminal block	8-22 awg		Sol/Str	.08-1	8.85	600V	50 amp
Ideal 452 Red WING-NUT Wire Connector	8-18 awg		Sol/Str	Self Torque	Self Torque	600V	
Ideal 451 Yellow WING-NUT Wire Connector	10-18 awg		Sol/Str	Self Torque	Self Torque	600V	
Ideal, In-Sure Push-In Connector Part #39	10-14 awg		Sol/Str	Self Torque	Self Torque	600V	
WAGO, 2204-1201	10-20 awg	16-24 awg	Sol/Str	Self Torque	Self Torque	600V	30 amp
WAGO, 221-612	10-20 awg	10-24 awg	Sol/Str	Self Torque	Self Torque	600V	30 amp
Dottie DRC75	6-12 awg		Sol/Str	Snap-In	Snap-In		
ESP NG-53	4-6 awg		Sol/Str		45	2000V	
	10-14 awg		Sol/Str		35		
ESP NG-717	4-6 awg		Sol/Str		45	2000V	
	10-14 awg		Sol/Str		35		
Brumall 4-5,3	4-6 awg		Sol/Str		45	2000V	
	10-14 awg		Sol/Str		35		

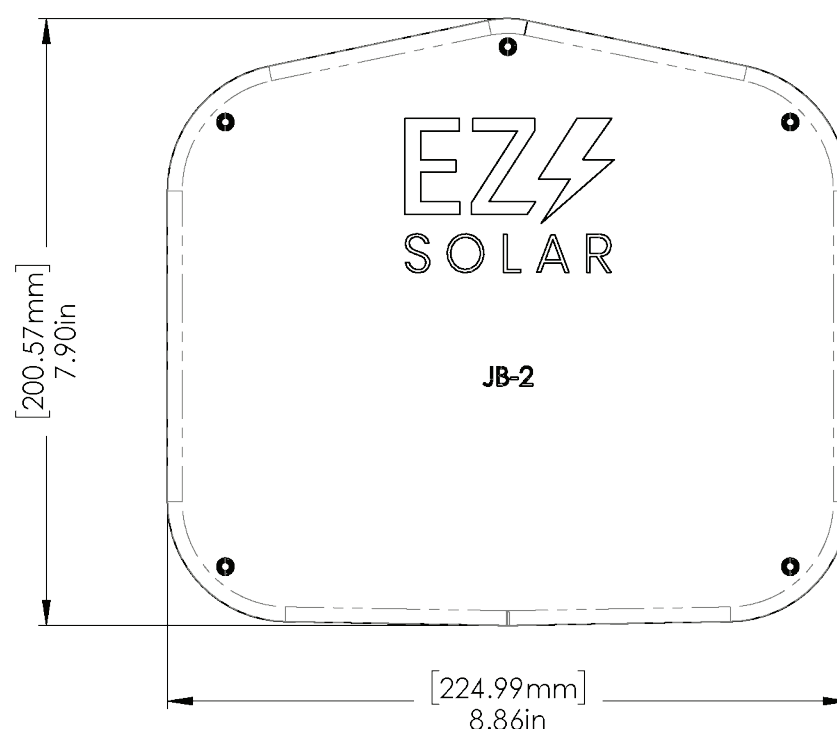
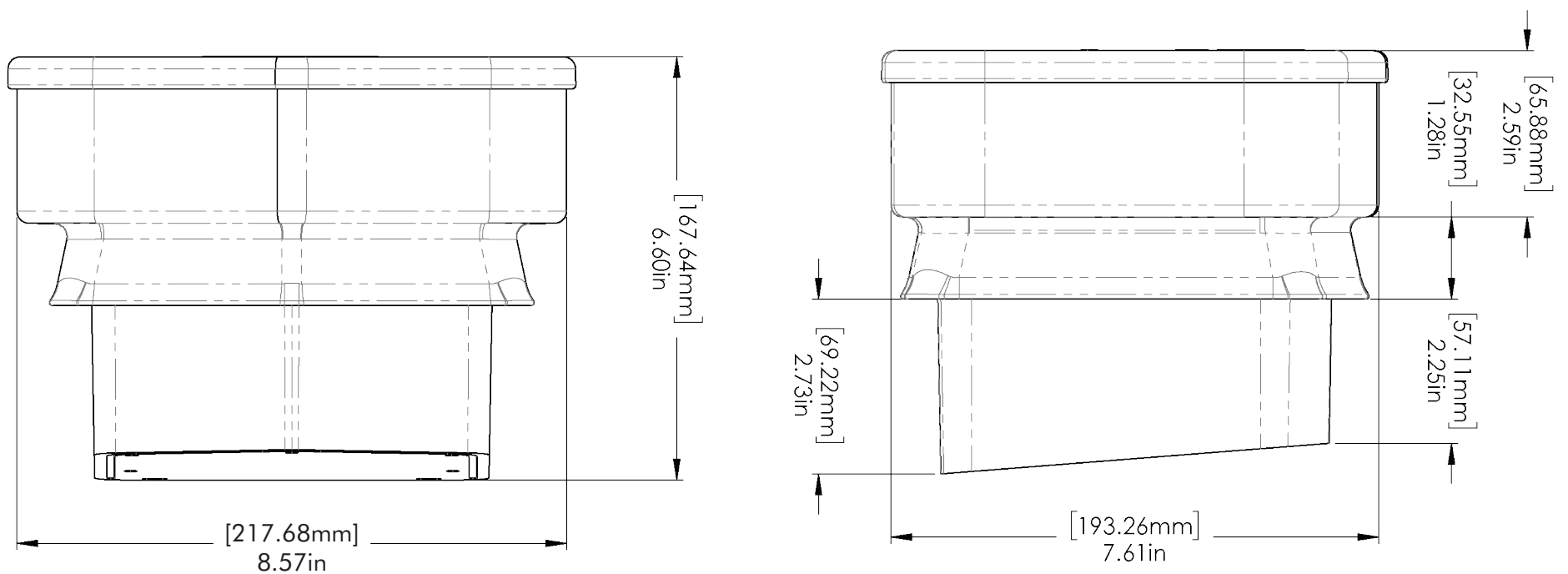
Table 2: Minimum wire-bending space for conductors through a wall opposite terminals in mm (inches)

Wire size, AWG or		Wires per terminal (pole)			
		1	2	3	4 or More
kcmil	(mm ²)	mm (inch)	mm (inch)	mm (inch)	mm (inch)
14-10	(2.1-5.3)	Not specified	-	-	-
8	(8.4)	38.1 (1-1/2)	-	-	-
6	(13.3)	50.8 (2)	-	-	-

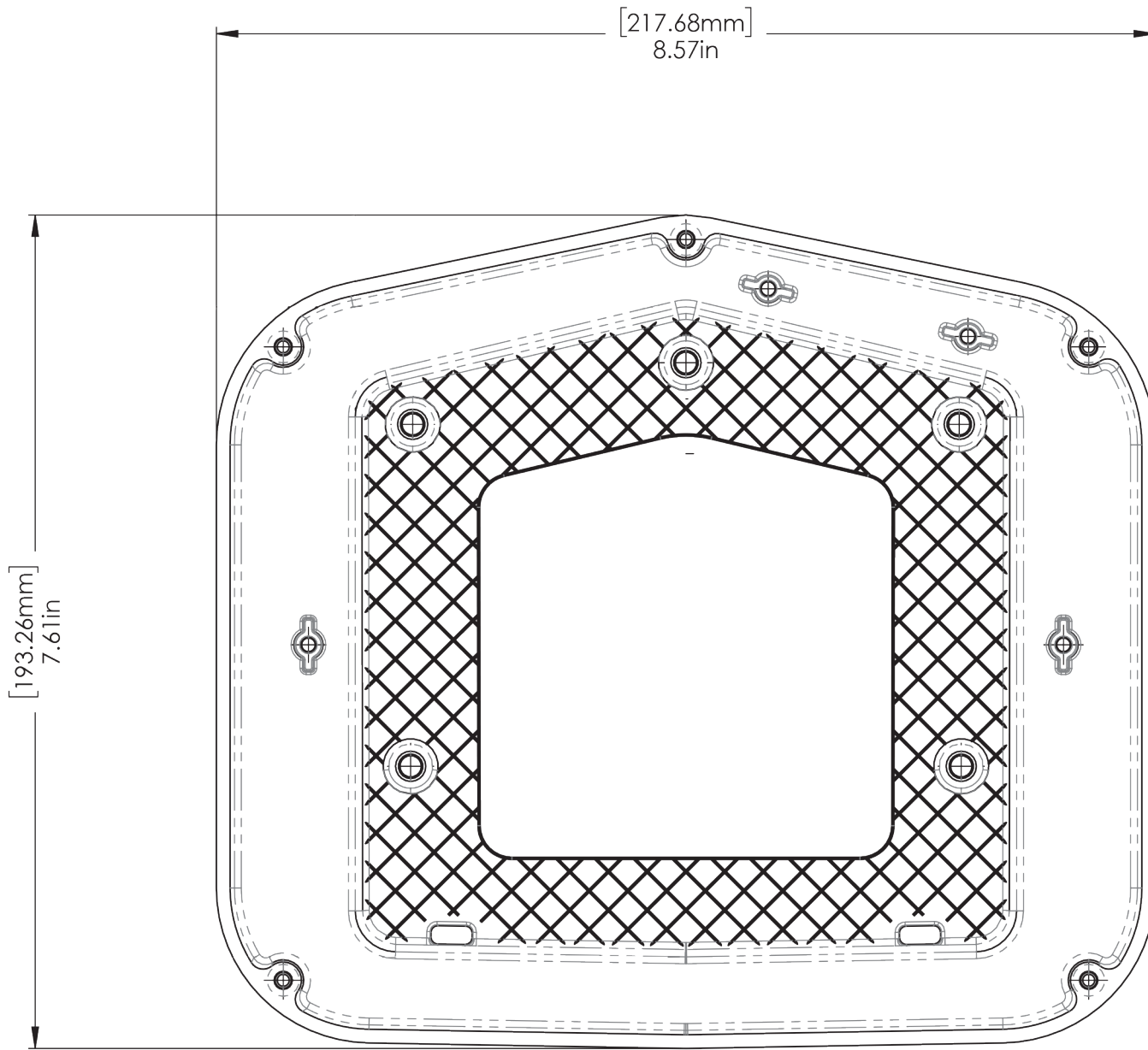
ITEM NO.	PART NUMBER	DESCRIPTION	QTY
1	JB-2 BODY+LID	POLYCARBONATE WITH UV INHIBITORS	1
2	UNIVERSAL FLASHING		1
3	#10 X 1-1/4" PHILLIPS PAN HEAD SCREW		6
4	#8 X 3/4" PHILLIPS PAN HEAD SCREW		6
5	#8 X 3/8" PHILLIPS PAN HEAD SCREW		2

SIZE B	DWG. NO. JB-2	REV
SCALE: 1:2.5	WEIGHT: 2 LBS	SHEET 1 OF 4

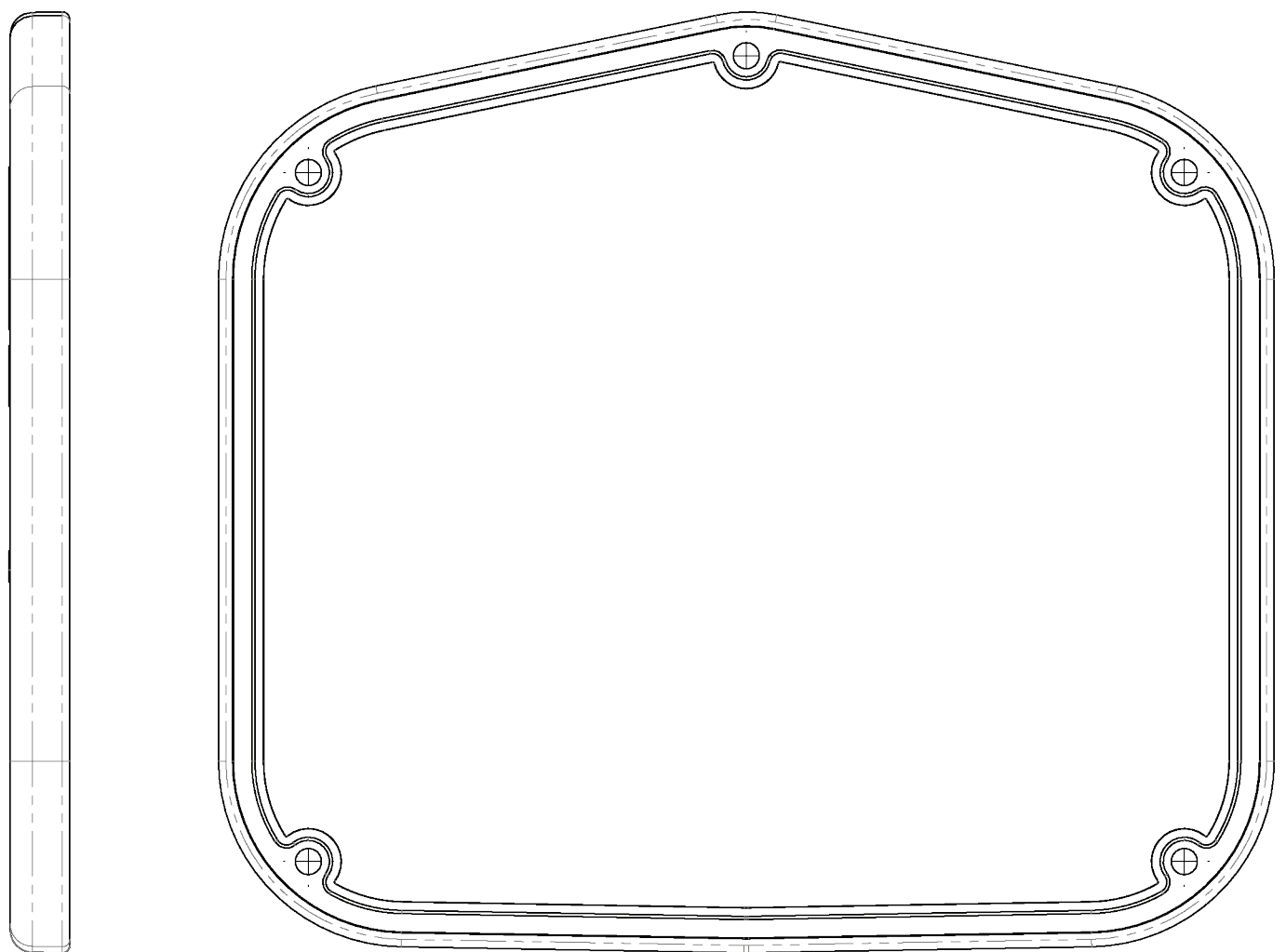
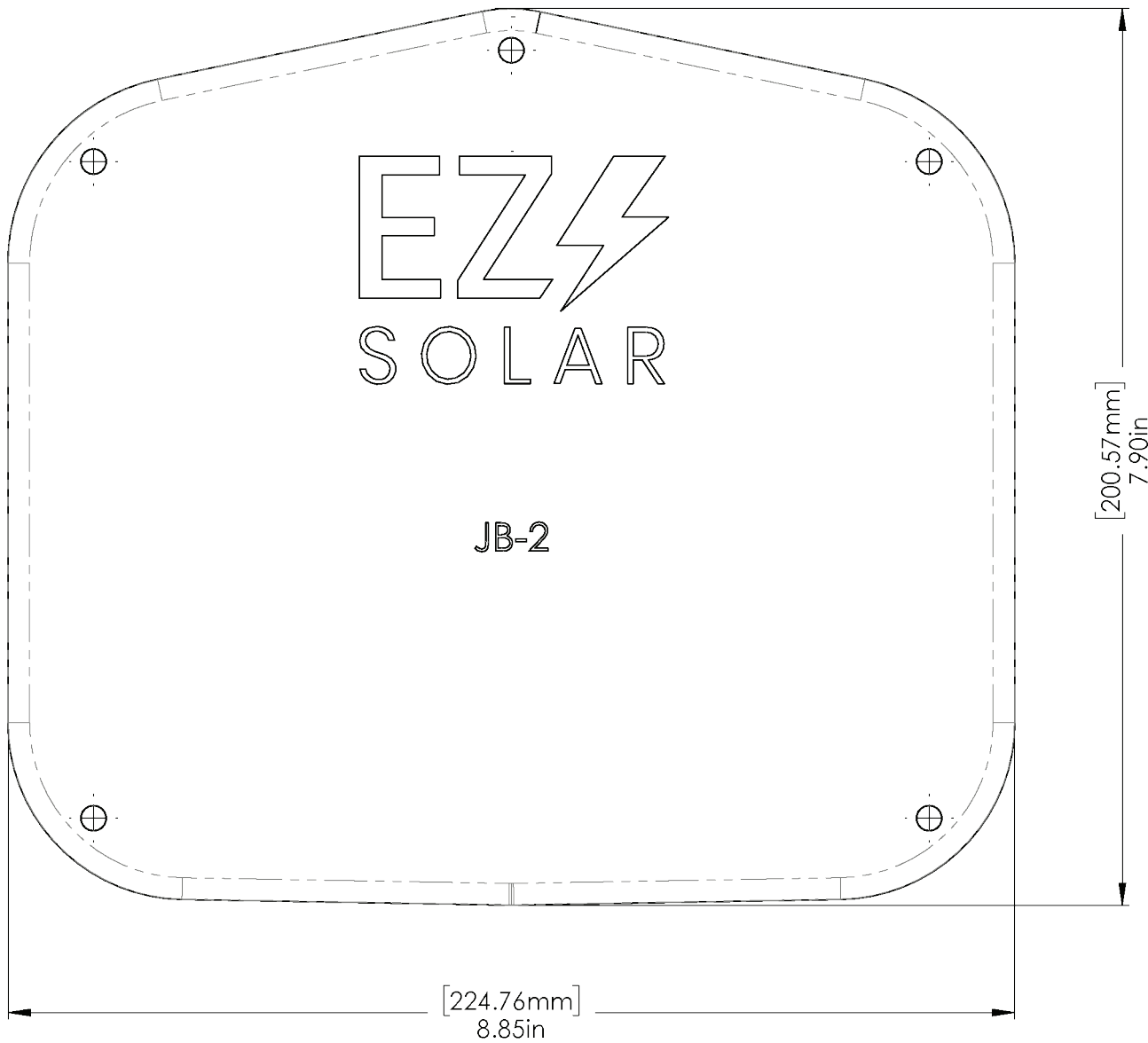
TORQUE SPECIFICATION:	15-20 LBS
CERTIFICATION:	UL STANDARD 1741, NEMA 3R
WEIGHT:	2 LBS



SIZE B	DWG. NO. JB-2	REV
SCALE: 1:2.5	WEIGHT: 2 LBS	SHEET 2 OF 4



SIZE B	DWG. NO. JB-2	REV
SCALE: 1:2.5	WEIGHT: 2 LBS	SHEET 3 OF 4



SIZE B	DWG. NO. JB-2	REV
SCALE: 1:2.5	WEIGHT: 2 LBS	SHEET 4 OF 4

