

S-5![®]

The Right Way!

These instructions are for use by those experienced in the craft. Always follow appropriate safety precautions and use appropriate tools.

Installation Instructions

S-5![®] Warning! Please use these products responsibly! Visit our website or contact your S-5! distributor for available load test results. The user and/or installer of these parts is responsible for all necessary engineering and design to ensure the S-5-T or S-5-Z has been properly spaced and configured.

Notice to S-5! users: Due to the many variables involved with specific panel products, climates, snow melt phenomena and job particulars, the manufacturer cannot and does not express any opinions as to the suitability of any S-5! assembly for any specific application and assumes no liability with respect thereto. S-5! products are tested for ultimate holding strength on various profile types and materials. This information is available from the S-5! website: www.S-5.com. This document is an installation guide only and the photographs and drawings herein are for the purpose of illustrating installation tools and techniques, not system designs.

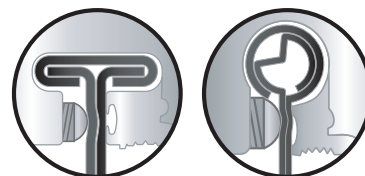
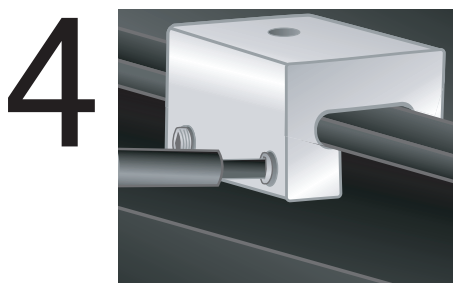
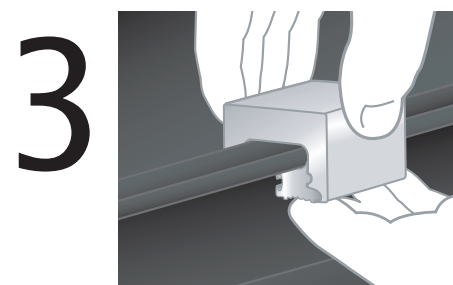
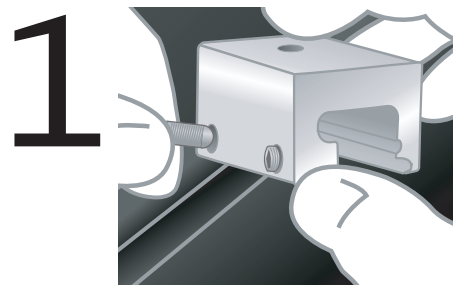
The S-5-T clamp is designed to fit "T" shaped standing seam profiles.
The S-5-Z clamp is designed to fit "bulb" shaped standing seam profiles.

Tools Needed

- Screwgun
 - 3/16" Allen Bit Tip (Provided)
 - Dial-Calibrated Torque Wrench*
- (*For accurate tension values, do NOT use a clicking torque wrench.)

To Install S-5-T and S-5-Z:

- 1) Partially thread the setscrews into the clamp by hand.
- 2) Position clamp at desired location along seam with the bolt hole in the correct (upslope or downslope) orientation.
- 3) Install by holding the small insert piece under the edge of the seam, then roll the clamp into position over the seam and insert.
- 4) Tighten the setscrews at the base of the clamp using a screwgun and the included screwgun bit tip. For optimal holding strength, setscrews should be tensioned to 160 to 180 inch pounds on 22ga steel, and 130 to 150 inch pounds on all other metals and thinner gauges of steel.



S-5![®] Warning! Please use this product responsibly!

Products are protected by multiple U.S. and foreign patents. Visit the website at www.S-5.com for complete information on patents and trademarks. For maximum holding strength, setscrews should be tensioned and re-tensioned as the seam material compresses. Clamp setscrew tension should be verified using a calibrated torque wrench between 160 and 180 inch pounds when used on 22ga steel, and between 130 and 150 inch pounds for all other metals and thinner gauges of steel. Consult the S-5! website at www.S-5.com for published data regarding holding strength.

Copyright 2012, Metal Roof Innovations, Ltd. S-5! products are patent protected. S-5! aggressively protects its patents, trademarks and copyrights.

The right way to attach almost anything to metal roofs!

888-825-3432

www.S-5.com

S-5!®

The Right Way!

Installation Instructions

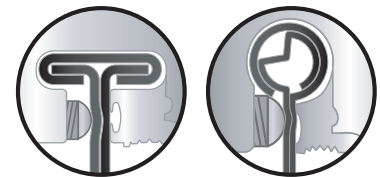
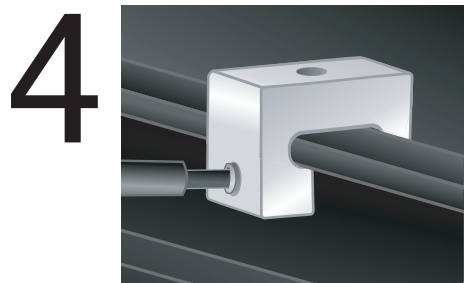
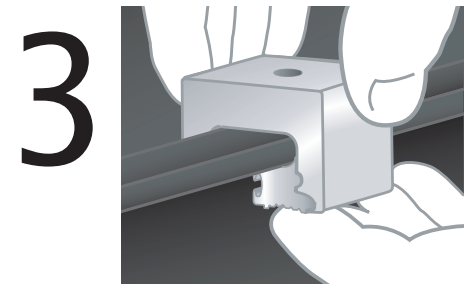
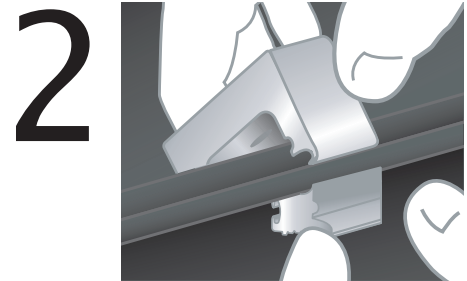
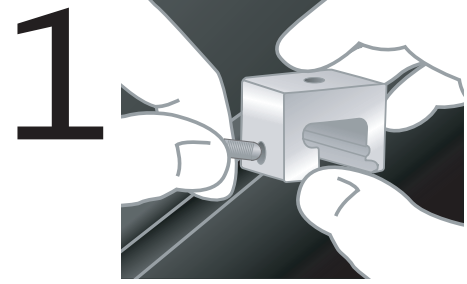
S-5! mini clamps are cost effective, non-penetrating standing seam clamps designed for medium-duty applications. They are a bit shorter than the standard clamps, having one setscrew rather than two.

The S-5-T Mini is designed to fit "T" shaped standing seam profiles.

The S-5-Z Mini is designed to fit "bulb" shaped standing seam profiles.

To Install S-5-T Mini or S-5-Z Mini:

- 1) Partially thread the setscrew into the mini clamp by hand.
- 2) Position clamp at desired location along seam.
- 3) Install by holding the small insert piece under the edge of the seam, then roll the mini clamp into position over the seam and insert.
- 4) Tighten the setscrew at the base of the mini clamp using a screwgun and the included screwgun bit tip. For optimal holding strength, setscrew should be tensioned to 160 to 180 inch pounds on 22ga steel, and 130 to 150 inch pounds on all other metals and thinner gauges of steel.



S-5!® Warning! Please use this product responsibly!

Products are protected by multiple U.S. and foreign patents. Visit the website at www.S-5.com for complete information on patents and trademarks. For maximum holding strength, setscrews should be tensioned and re-tensioned as the seam material compresses. Clamp setscrew tension should be verified using a calibrated torque wrench between 160 and 180 inch pounds when used on 22ga steel, and between 130 and 150 inch pounds for all other metals and thinner gauges of steel. Consult the S-5! website at www.S-5.com for published data regarding holding strength.

Copyright 2012, Metal Roof Innovations, Ltd. S-5! products are patent protected.

S-5! aggressively protects its patents, trademarks and copyrights.

The right way to attach almost anything to metal roofs!

888-825-3432

www.S-5.com

S-5-T Mini and S-5-Z Mini Install