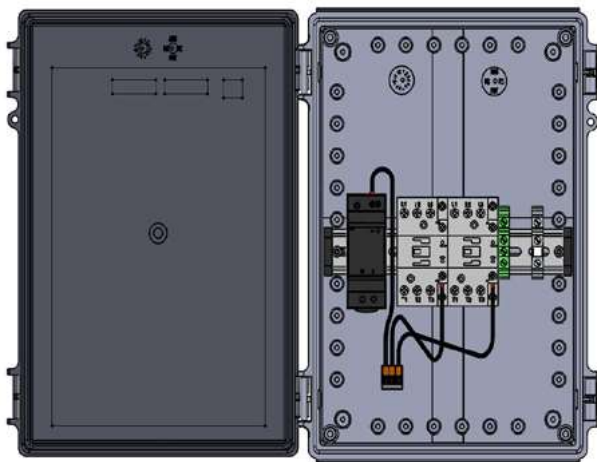


Enphase IQ Load Controller



The **Enphase IQ Load Controller**, when used in conjunction with the IQ System Controller, enables control of up to two loads or shedding of up to two solar circuits when operating in an off-grid mode with the Enphase energy management system.

Use the IQ Load Controller for controlling, split-phase loads or for solar circuit shedding when solar power exceeds allowed solar to storage ratios. The IQ Load Controller supports control of split-phase loads i.e., loads wired L1-L2 and running at 240V nominal AC voltage.

Powerful

- Control up to 2, 40A resistive loads or 5HP/25A inductive loads
- Shed up to 2 excess PV circuits (up to 40A each) to maintain Solar-To-Storage ratio when off-grid
- Prioritize essential appliances during a grid outage to optimize energy consumption and prolong battery life
- Choose from three load control modes for flexibility or manually control loads from the Enphase App

Simple

- A complete solution for use with the IQ System Controller's load control feature
- DIN rail mounted components enable easy installation and servicing
- Easy configuration via Enphase Installer App

Reliable

- Designed for indoor or outdoor installations
- 5 years warranty
- Durable NEMA 4X Enclosure

Enphase IQ Load Controller

| | | |
|--------------------------------------|-------------------------------------------------------------------------------------------------------------------------------------|----------------------|
| EP-NA-LK02-040 | IQ Load Controller for use with IQ System Controller's auxiliary contacts to shed heavy loads or M-series, IQ series microinverters | |
| INPUT DATA | | |
| DC Power Supply input voltage | 120Vac | |
| DC Power Supply input Current rating | 12A | |
| CAPACITY | | |
| Total loads controlled | 2 loads running at 240Vac or 4 loads at 120Vac | |
| Max load controlled | 40A resistive, 25A inductive | |
| MECHANICAL DATA | | |
| Ambient temperature range | -25 to 40 °C | |
| Dimensions (WxHxD) | 9.8 x 13.9 x 5.9 (in) | |
| Weight | 6.61 (lbs) | |
| Cooling | Natural Convection | |
| Enclosure | Outdoor, NEMA type 4X, polycarbonate construction | |
| WIRE SIZES | | |
| Contactor | <ul style="list-style-type: none">Line/Load power terminalsContactor A1/A2 control terminals | 14-8AWG 18-16AWG |
| Power Supply | <ul style="list-style-type: none">120V L-N input terminals120V V+/V- output terminals | 14-12AWG 18-16AWG |
| Ground terminal block | 24-6AWG | |
| Neutral terminal block | 24-6AWG | |
| COMPLIANCE | | |
| Compliance | UL1741 | |
| WARRANTY | | |
| Limited Warranty | 5 years | |

To learn more about Enphase offerings, visit enphase.com