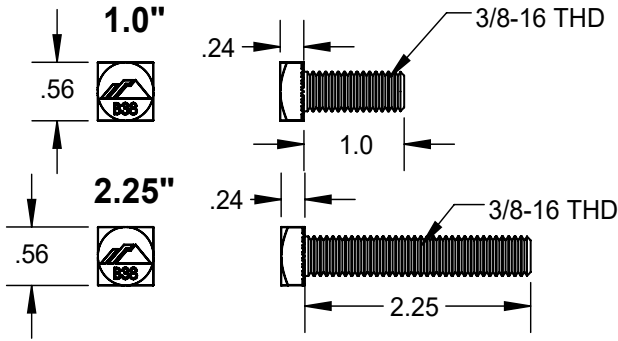


ITEM NO	DESCRIPTION	QTY IN KIT
1	BOLT, BONDING 3/8-16 SQ HEAD, 2.25"	1
2	NORTH TILT LEG, 1.5" SQ, LENGTH VARIES	1
3	NUT, FLANGE HEX 3/8-16 SS	3
4	BOLT, BONDING 3/8-16 SQ HEAD, 1.0"	1
5	PRE-ASSEMBLED SOUTH TILT LEG	1
6	WASHER, FLAT 3/8 SS	1
7	BOLT, 3/8-16 X 2.5" CS SST	1
8	U-FOOT	1

TILT MOUNT KIT OPTIONS

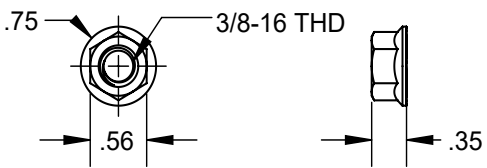
PART NUMBER	DESCRIPTION	NORTH TILT LEG LENGTH
TM-FTL-010	Kit, Fixed Tilt Leg, 10", Mill	10"
TM-FTL-015	Kit, Fixed Tilt Leg, 15", Mill	15"
TM-FTL-020	Kit, Fixed Tilt Leg, 20", Mill	20"
TM-FTL-025	Kit, Fixed Tilt Leg, 25", Mill	25"
TM-FTL-030	Kit, Fixed Tilt Leg, 30", Mill	30"

1,4) Bolt, Bonding 3/8-16 Sq Head



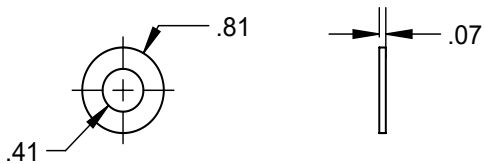
Property	Value
Material	Stainless Steel
Finish	Clear

3) Nut, Flange Hex 3/8-16 SS



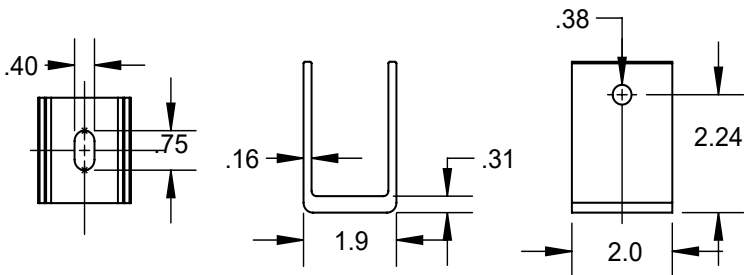
Property	Value
Material	Stainless Steel
Finish	Clear

6) Washer, Flat 3/8 SS



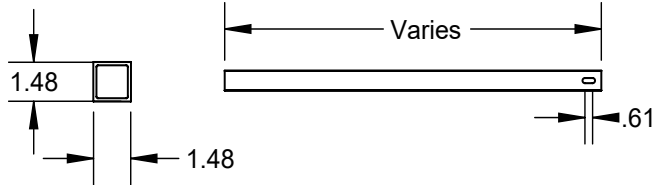
Property	Value
Material	Stainless Steel
Finish	Clear

8) U-Foot



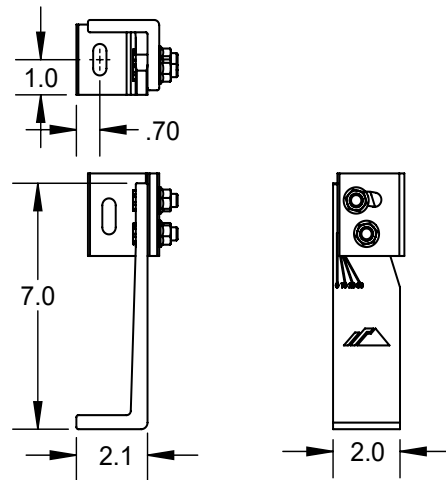
Property	Value
Material	Aluminum
Finish	Mill

2) North Tilt Leg



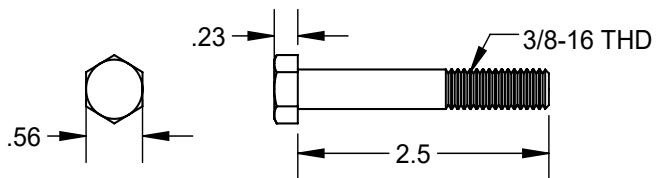
Property	Value
Material	Aluminum
Finish	Mill

5) Pre-assembled South Tilt Leg



Property	Value
Material	Aluminum
Finish	Mill

7) Bolt, 3/8-16 X 2.5" CS SS



Property	Value
Material	Stainless Steel
Finish	Clear