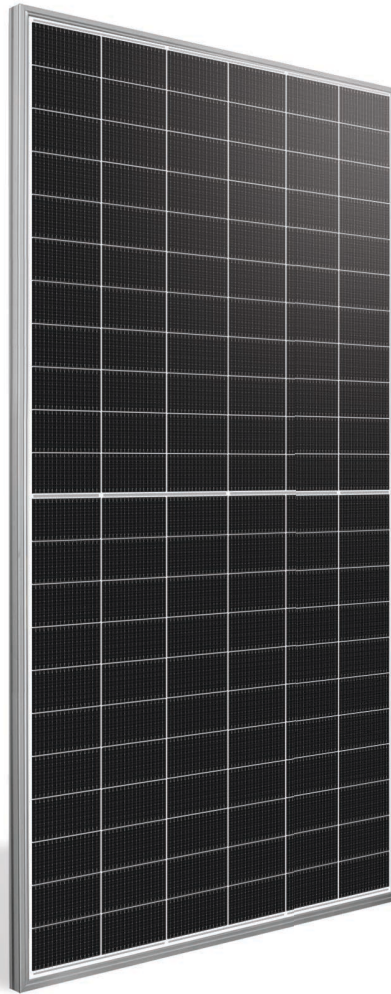


SILFAB COMMERCIAL NTC



SIL-530 XM
BIFACIAL



• NEXT-GENERATION N-TYPE CELL TECHNOLOGY

Manufactured exclusively in the USA.

- Improved Shade Tolerance
- Improved Low-Light Performance
- Increased Performance in High Temperatures
- Efficient Bifacial Energy Yield
- Enhanced Durability
- Reduced Degradation Rate
- 25-Year Product Warranty/
30-Year Performance Warranty



SILFABSOLAR.COM



ELECTRICAL SPECIFICATIONS		530		
Test Conditions		STC	BSTC	NOCT
Module Power (Pmax)	Wp	530	578.2	391.3
Maximum power voltage (Vpmax)	V	41.05	41.05	37.76
Maximum power current (Ipmax)	A	12.91	14.08	10.36
Open circuit voltage (Voc)	V	47.74	47.79	43.91
Short circuit current (Isc)	A	13.71	14.96	11.00
Module efficiency	%	22.3%		
Maximum system voltage (VDC)	V		1500	
Series fuse rating	A		30	
Power Tolerance	Wp		0 to +10	
Bifaciality Factor	%		80 ± 10	

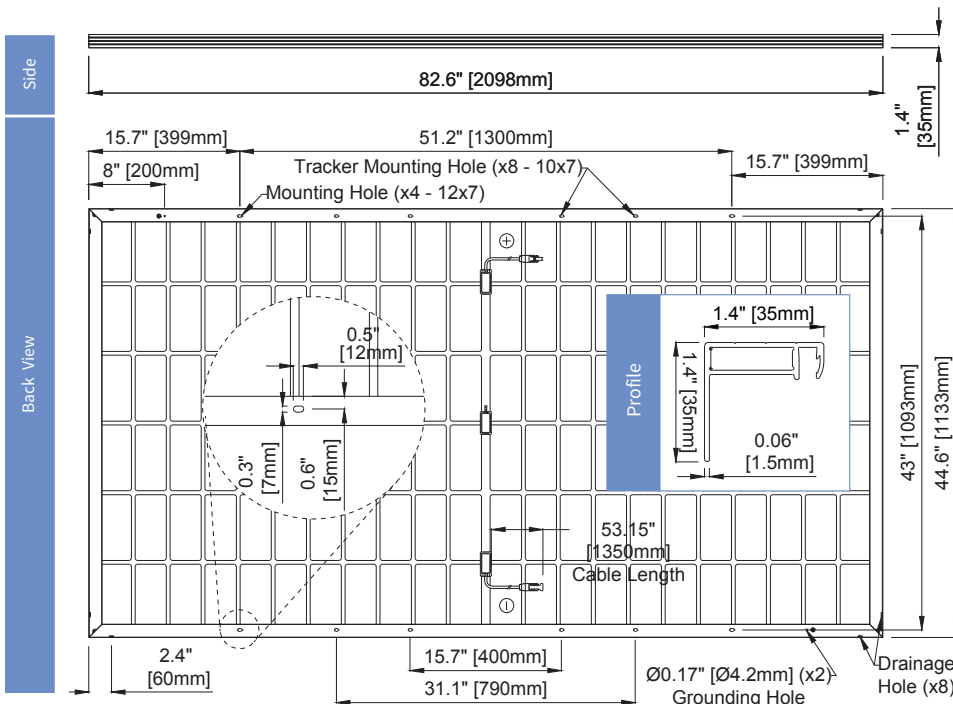
Performance conditions: Measurement tolerance ≤ 3% • Standard Test Conditions (STC): 1000 W/m², AM 1.5, Temperature 25 °C • Nominal Operating Cell Temperature (NOCT): 800 W/m², AM 1.5 • Bifacial Standard Test Conditions (BSTC): 1000 W/m² + φ × 135 W/m², φ = 80 %, AM 1.5 • Electrical characteristics may vary by ±5%.

MECHANICAL PROPERTIES / COMPONENTS	METRIC	IMPERIAL
Module weight	26.2 kg ± 0.2 kg	57.8 lbs ± 0.4 lbs
Dimensions (H x L x D)	2098 mm x 1133 mm x 35 mm	82.6 in x 44.6 in x 1.4 in
Maximum surface load (wind/snow)*	2400 Pa rear load / 5400 Pa front load	50.1 lb/ft ² rear load / 112.8 lb/ft ² front load
Hail impact resistance	ø 25 mm at 83 km/h	ø 1 in at 51.6 mph
Cells	132 Half cells - N-Type Silicon solar cell 182 x 91 mm	132 Half cells - N-Type Silicon solar cell 3.58 x 7.16 in
Glass	3.2 mm high transmittance, tempered, DSM antireflective coating	0.126 in high transmittance, tempered, DSM antireflective coating
Cables and connectors (refer to installation manual)	1350 mm, ø 5.7 mm, EVO2 from Staubli	53.1 in, ø 0.22 in (12AWG), EVO2 from Staubli
Backsheet	High durability, superior hydrolysis and UV resistance, multi-layer dielectric film, fluorine-free clear PV backsheet	
Frame	Anodized Aluminum (Silver)	
Junction Box	UL 3730 Certified, IEC 62790 Certified, IP68 rated, 3 diodes	

TEMPERATURE RATINGS		WARRANTIES	
Temperature Coefficient Isc	0.04 %/°C	Module product workmanship warranty	25 years**
Temperature Coefficient Voc	-0.24 %/°C	Linear power performance guarantee	30 years
Temperature Coefficient Pmax	-0.29 %/°C		≥ 98% end 1st yr ≥ 94.7% end 12th yr ≥ 90.8% end 25th yr ≥ 89.3% end 30th yr
NOCT (± 2°C)	45 °C		
Operating temperature	-40/+85 °C		

CERTIFICATIONS		SHIPPING SPECS	
Product	UL 61215, UL 61730, CSA C22.2#61730, IEC 61215, IEC 61730, IEC 61701 (Salt Mist Corrosion), IEC 62716 (Ammonia Corrosion), CEC Listed, UL Fire Rating: Type 1	Modules Per Pallet:	29 or 29 (California)
Factory	ISO9001:2015	Pallets Per Truck	24 or 23 (California)
		Modules Per Truck	696 or 667 (California)

* ⚠ Warning. Read the Safety and Installation Manual for mounting specifications and before handling, installing and operating modules.
 ** 12 year extendable to 25 years subject to registration and conditions outlined under "Warranty" at silfabsolar.com.
 PAN files generated from 3rd party performance data are available for download at: silfabsolar.com/downloads.



SILFAB SOLAR INC.

1770 Port Drive
 Burlington WA 98233 USA
 T +1 360.569.4733
 info@silfabsolar.com
SILFABSOLAR.COM

7149 Logistics Lane
 Fort Mill SC 29715 USA
 T +1 839.400.4338

240 Courtneypark Drive East
 Mississauga ON L5T 2Y3 Canada
 T +1 905.255.2501
 F +1 905.696.0267

Sales & Customer Support
 T +1.833.998.6642

Silfab - SIL-530-XM-BIFACIAL 20250527
 No reproduction of any kind is allowed without permission.
 Data and information is subject to modifications without notice. © Silfab Solar Inc., 2024. Silfab Solar® is a registered trademark of Silfab Solar Inc.